

Λ Μ Á Λ Ι



IN OUR HANDS, LUXURY BECOMES CLAY,  
MOLDED, BENT AND GIVEN NEW PURPOSE.  
FASHIONED TO FIT YOU LIKE A GLOVE.





NOTHING IS WRITTEN IN STONE.



LIKE SHIFTING SANDS AND FLOWING WATER



THE FUTURE IS EVER-CHANGING



BY THE SEA, LUXURY IS ANYTHING I WANT IT TO BE.



An aerial photograph of a tropical coastline. The top half of the image shows deep, dark blue water. Below this, a wide, shallow area of turquoise water reveals a sandy beach and coral reefs. The bottom left corner shows a dense line of green tropical trees and palm fronds. The text 'RESHAPE DESTINY' is centered in the turquoise water area.

# RESHAPE DESTINY

TRUE LUXURY, BY ITS VERY DEFINITION, IS A RARITY.  
AMALI'S CREATIONS ARE THE PRIVILEGE OF A SELECT FEW.  
FOR A LUXURY FOR ALL, IS LUXURY FOR NONE.



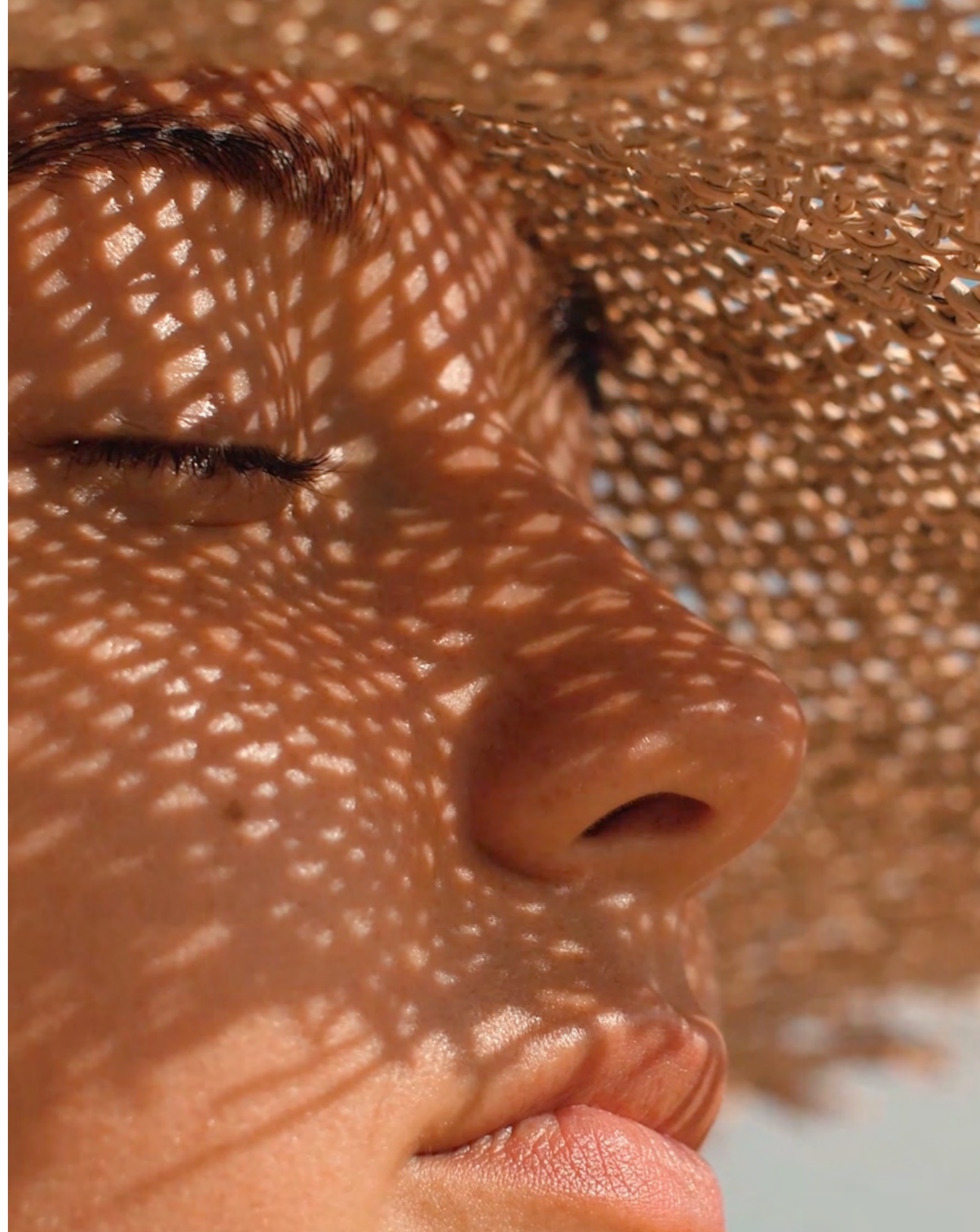




## A DESIRE FULFILLED

AMALI CREATES CONCEPT LUXURY VILLAS AND MASTER COMMUNITIES, ALL WITH A HIGH DEGREE OF CUSTOMIZABILITY TO SUIT YOUR EXACTING NEEDS. CREATED BY HAND-PICKED INTERNATIONAL DESIGNERS, NO TWO UNITS ARE EVER ALIKE.

A M Ā L I












LAY CLAIM TO THE SEA

AMALI





FALL ASLEEP TO THE SOUND OF THE WAVES AT NIGHT.  
OR WADE RIGHT INTO THE SURF WHENEVER THE FANCY ARISES.  
WITH THE WATER SO CLOSE TO YOUR DOORSTEP, YOU'LL SOON  
FALL PREY TO THE BEGUILING CHARM OF SEASIDE LIVING.



A M Ā L I





THE BLOCKY EXTERIORS EXUDE THE ENERGY OF A MODERN WORK OF ART, WITH GEOMETRICAL ELEMENTS COMING TOGETHER SATISFYINGLY.

NATURAL LIGHT IS GIVEN ALL THE RESPECT IT DESERVE, WITH THE TALL GLASS WINDOWS AND OTHER SMALLER GLASS FEATURES CAPTURING FORMIDABLE AMOUNTS OF SUNLIGHT EVERY DAY.









LOOK ON IN SATISFACTION AT THE MANY LAVISH AMENITIES  
IN YOUR BACKYARD. SHARE A TALE OR TWO BY THE SUNKEN  
FIRE PIT, TAKE A DIP IN THE GORGEOUS SWIMMING POOL,  
OR BREATHE IN THE FRESH AIR WITHIN YOUR FULLY  
LANDSCAPED, SEA-FACING GARDEN. PURE BLISS.

AMĀLI













## BEAUTY AT ITS MOST BASIC

ELEGANT STATUARIO MARBLE, STRAIGHT FROM ITALY'S PEAKS, LINES THE FLOORS, COUNTERTOPS AND BATHROOM WALLS. BRONZE MIRRORED ACCEPTS CRISSCROSS ACROSS THE CEILING. WHITE ONYX ACCENT WALLS, BLEACHED OAK AND BRUSHED BRONZE METALLIC INSERTS ADD THE FINISHING TOUCHES TO THESE ARTFULLY DESIGNED INTERIORS.

A M Ā L I

























ENTERTAIN FAMILY AND FRIENDS IN THE STRIKING MAJLIS, WHICH TAKES INSPIRATION FROM TRADITIONAL ARABIAN AESTHETICS AND ADDS A UNIQUE POST-MODERN TOUCH. A LOW IRON LAMINATED GLASS FLOORING WITH FLOWING WATER UNDERNEATH IT IS UNDOUBTEDLY THE SINGLE MOST CAPTIVATING FEATURE OF THIS ROOM.













MAKE WAY FOR UNLIMITED  
MOVIE NIGHTS AT YOUR  
OWN PRIVATE CINEMA.  
GAZE IN WONDER AT YOUR  
SURROUNDINGS, WHICH  
INCLUDE A STRETCHED  
CEILING AND A STUNNING  
FIBER OPTIC CEILING.









DIFFERENCE IN THE DETAILS







TASTEFUL DESIGNER FURNITURE  
CHOICES ELEVATE THE VARIOUS LIVING  
SPACES, INCLUDING MODULAR SOFAS  
FROM ROCHEBOBOIS, CHAIRS BY LUX XU  
COVETHOUSE, AND VANITY COUNTERS  
BY BOCCA DO LOBO.











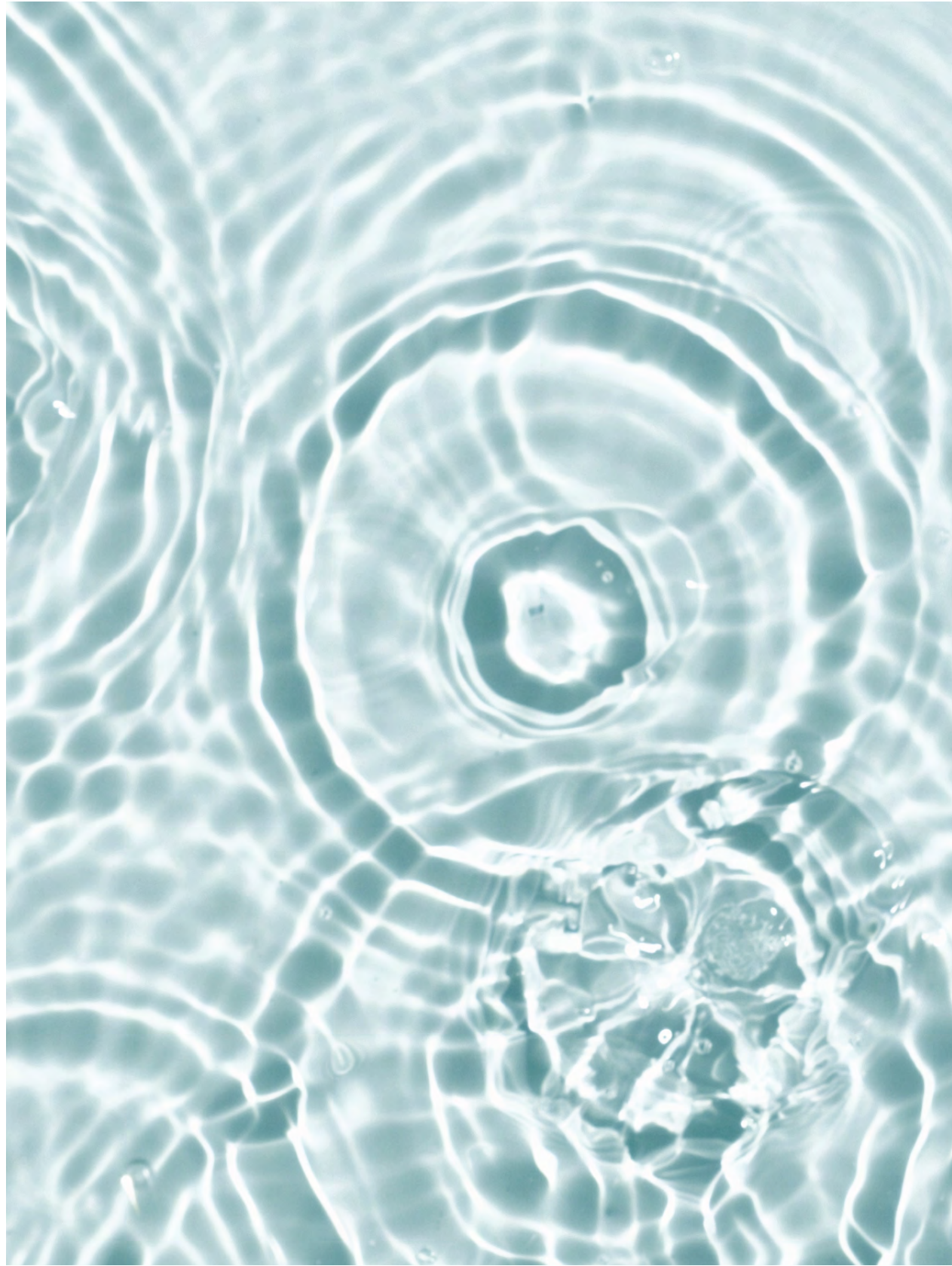


LUXURY CONTINUES IN THE VARIOUS BEDROOMS, WITH CONSOLE  
TABLES AND MIRRORS BY DAVINCI LIFESTLYE, A MASTER BED,  
NIGHT TABLE AND NIGHT LAMP BY ROBERTO CAVALLI AND  
CUSTOMIZED LUXURY PENDANT LIGHTS FROM MURANO ITALY.







































# FLOOR PLANS



GROUND FLOOR





FIRST FLOOR



TERRACE



## THE FOUNDERS

AMALI IS THE BRAINCHILD OF AMIRA AND ALI SAJWANI, THE DAUGHTER AND SON, RESPECTIVELY, OF MR. HUSSAIN SAJWANI, FOUNDER AND CEO OF THE MIDDLE EAST'S LARGEST PRIVATE REAL ESTATE DEVELOPMENT COMPANY, DAMAC PROPERTIES.



AMIRA SAJWANI

Emirati businesswoman and entrepreneur. Amira oversees growth strategy and product development across the brand's international real estate portfolio. Amira plays an active role at all stages of the development process, from design and construction to marketing and analytics. She is also responsible for DAMAC's network of direct and independent sales agents, as well as associated programmes and initiatives. In 2022, Amira launched PRYPTO, a pioneering proptech ecosystem aimed to transform the real estate industry with tech-enabled solutions to provide knowledge, information and services. Graduate of both University College London (UCL) and London School of Economics (LSE).



ALI SAJWANI

Serial entrepreneur and tech enthusiast. Ali focuses on growth-critical business functions, expansion opportunities and long-term strategy. Since joining DAMAC in 2014, Ali prioritized customer satisfaction at the core of his strategy to ensure they have a luxurious experience. In 2022, Ali launched D-Labs, a \$100 million investment aimed at creating immersive digital twins of DAMAC's assets and communities, digitalizing the sales journey from beginning to end. He is an alumnus of Northeastern University, Boston, with a major in Economics.



V I L L A

E L A I N E





